



MONTHLY MEMBERSHIP PROGRESS REPORT

District 411 A

Results as of: 2/28/2017

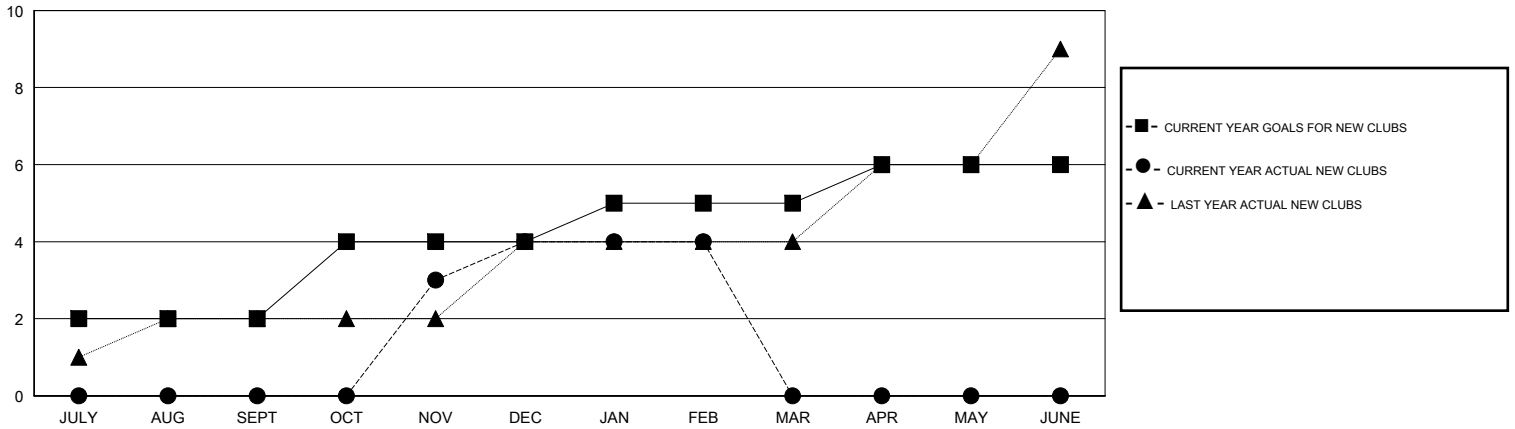
GMT: Amarpreet Sembhi

LOCATION KENYA AFRICA

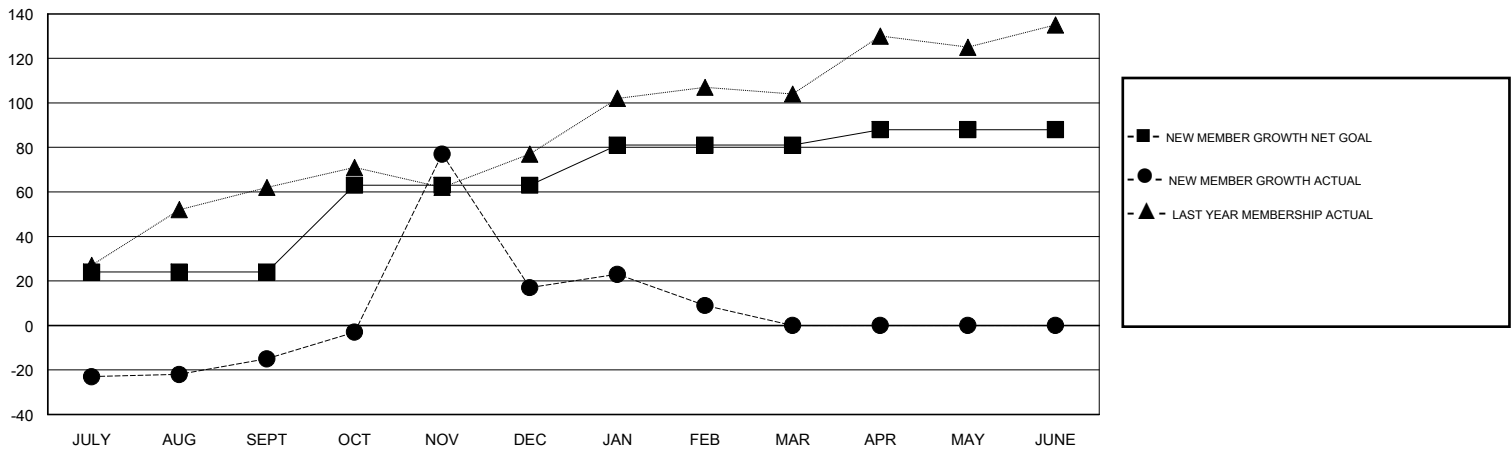
GMT CA

Clubs				Members			
RESULTS FOR 2016-2017				RESULTS FOR 2016-2017			
QUARTER	NEW CLUB GOAL	NEW CLUBS	DROPPED CLUBS	QUARTER	NEW MEMBER GROWTH NET GOAL (not reinstated or transfers)	NEW MEMBER GROWTH ACTUAL (not reinstated or transfers)	DROPPED MEMBERS ACTUAL (including transfers)
JULY/AUG/SEPT	2	0	1	JULY/AUG/SEPT	24	26	41
OCT/NOV/DEC	2	4	3	OCT/NOV/DEC	39	144	112
JAN/FEB/MAR	1	0	0	JAN/FEB/MAR	18	44	52
APR/MAY/JUNE	1	0	0	APR/MAY/JUNE	7	0	0

GOALS AND ACTUAL NEW CLUBS CUMULATIVE



GOALS AND ACTUAL MEMBERS CUMULATIVE



DROPPED CLUBS: 4	30 CLUBS OF 74 ADDED 1 OR MORE NEW MEMBERS	<u>GENDER DISTRIBUTION</u>	
DROPPED MEMBERS		MALE	1,054 (64.35%)
DECEASED	2	FEMALE	584 (35.65%)
CLUB CANCELLED	77	TOTAL FAMILY UNIT MEMBERS	
OTHER	126	310	
TOTAL	205	FAMILY MEMBERS PAYING HALF DUES	
		168	

[CLICK HERE FOR CUMULATIVE MEMBERSHIP DATA](#)